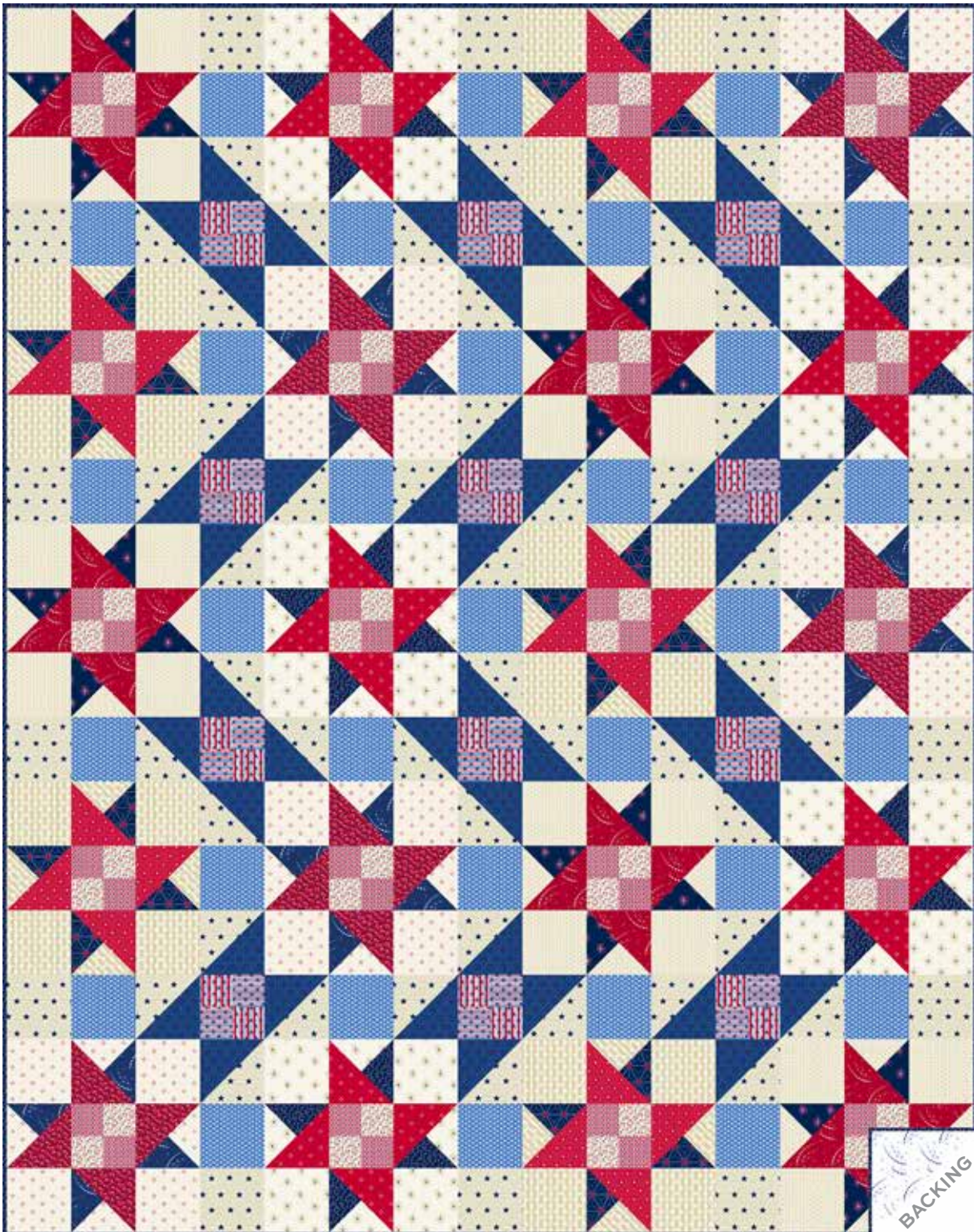


# Tradition

ANDOVER FABRICS



Bright Stars Quilt designed by: **Janet Houts**  
Quilt Size: **60" x 76"** • Skill Level: **Intermediate**

Free Pattern Download Available

1384 Broadway, 24th Floor, New York, NY 10018  
Tel. (800) 223-5678 • [andoverfabrics.com](http://andoverfabrics.com)



# Bright Stars Quilt

Introducing Andover Fabrics new collection: **TRADITION** by Andover Fabrics

Quilt designed by Janet Houts

Quilt finishes 60" x 76"

20 Blocks: 12" x 12"

*Stars and stripes and exploding fireworks make this delightful quilt a crowd pleaser. The clever diagonal arrangement of the dark blue triangles gives an added design element.*

## Cutting Directions

**Note:** Read assembly directions before cutting patches. All measurements are cut sizes and include ¼" seam allowances. A fat ½ is a 9" x 20"-22" cut of fabric. A fat ¼ is an 18" x 20"-22" cut. WOF designates the width of fabric from selvedge to selvedge (approximately 42" wide).

**Fabrics A, C, M, P** From each:

Cut (5) squares 5¼", cut in half diagonally twice to make 20 quarter-square triangles for blocks

**Fabrics B, L, O, S** From each:

Cut (10) squares 4⅞", cut in half diagonally to make 20 half-square triangles for blocks

**Fabric D**

Cut (24) squares 4⅞" (or 5") for sash HST (Read Step 4)  
Cut (14) squares 4½" for sash

**Fabric E**

Cut (31) squares 4½" for sash

**Fabrics F, I, K, Q** From each:

Cut (5) squares 5¼", cut in half diagonally twice to make 20 quarter-square triangles for blocks  
Cut (20) squares 4½" for blocks

**Fabrics G, N** From each:

Cut (40) squares 2½" for block centers

**Fabrics H, J** From each:

Cut (24) squares 2½" for setting squares

**Fabric R**

Cut (24) squares 4⅞" (or 5") for sash HST (Read Step 4)

**Binding**

Cut (7) strips 2½" x WOF for binding

**Backing**

Cut (2) lengths 42" x 68", pieced to fit quilt top with overlap on all sides

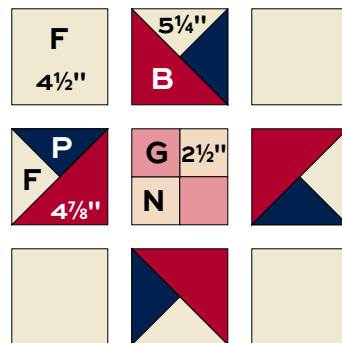
## Fabric Requirements

		Yardage	Fabric
<b>Fabric A</b>	blocks	fat ¼	1321-B
<b>Fabric B</b>	blocks	fat ¼	1321-R
<b>Fabric C</b>	blocks	fat ¼	1322-B
<b>Fabric D</b>	blocks	¾ yard	1322-L
<b>Fabric E</b>	sash	⅝ yard	1323-B
<b>Fabric F</b>	blocks	½ yard	1323-L
<b>Fabric G</b>	blocks	fat ¼	1323-R
<b>Fabric H</b>	set	fat ⅞	1324-B
<b>Fabric I</b>	blocks	½ yard	1324-L
<b>Fabric J</b>	set	fat ⅞	1324-R
<b>Fabric K</b>	blocks	½ yard	1325-L
<b>Fabric L</b>	blocks	fat ¼	1325-R
<b>Fabric M</b>	blocks	fat ¼	1326-B
<b>Fabric N</b>	blocks	fat ¼	1326-L
<b>Fabric O</b>	blocks	fat ¼	1326-R
<b>Fabric P</b>	blocks	fat ¼	1327-B
<b>Fabric Q</b>	blocks	½ yard	1327-L
<b>Fabric R</b>	sash	½ yard	1328-B
<b>Fabric S</b>	blocks	fat ¼	1328-R
<b>Binding</b>		⅝ yard	1326-B
<b>Backing</b>		4 yards	1321-L

## Making the Quilt

- Referring to the Block Piecing Diagram, join Fabric P and F quarter-square triangles together, then sew a Fabric B half-square triangle along the long edge. This star point unit should measure 4½" from edge to edge. If it does not, adjust your stitching or pressing technique. Make 4 star point units like this.

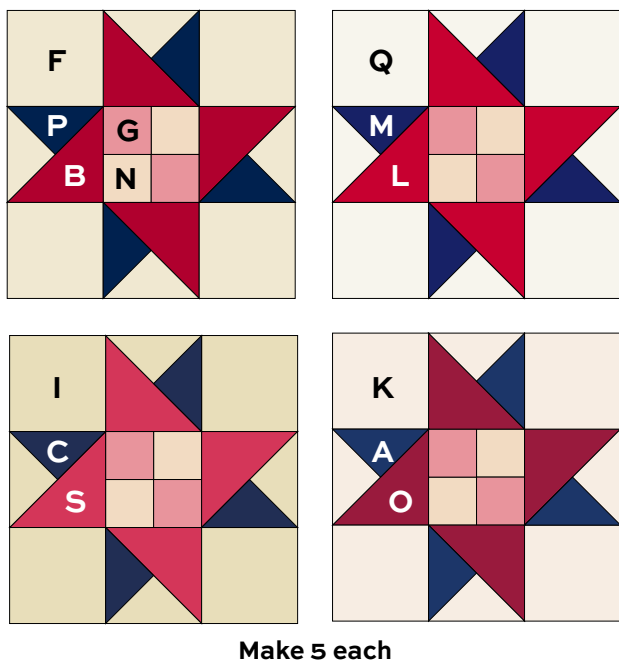
- To make the block center, sew 2 Fabric G and 2 Fabric N squares together, making a square as shown.



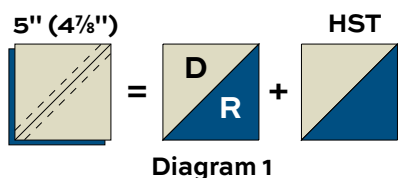
Block Piecing

# Bright Stars Quilt

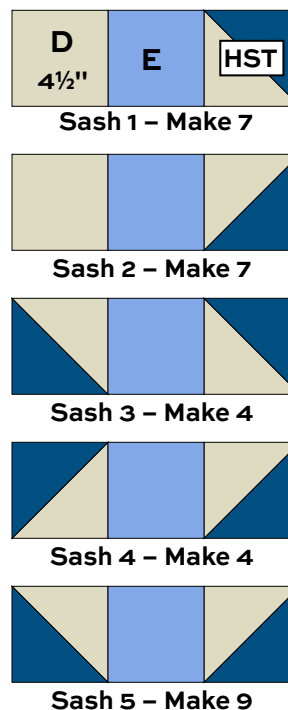
3. Arrange and join 4 star point units, the pieced center, and 4 Fabric F squares into 3 rows as shown, rotating the star point units to make the design. Join the rows to make a block. It should measure 12½" from edge to edge. Make 5 blocks alike. Likewise, make 5 blocks of each colorway, referring to the block diagrams for fabric placement.



4. The sashes use half-square triangles (HST) that finish 4" square. Use your favorite method to make HST, or follow these directions. Cut squares 5" for HST that will be trimmed after stitching. If you prefer not to trim, cut squares 4⅞". Draw a diagonal line on the wrong side of each Fabric D 5" (4⅞") square (Diagram 1). Place a marked square on a Fabric R square, right sides together. Sew ¼" seam on each side of the marked line; cut apart on the marked line. Press open to make pieced HST. Trim to 4½" if needed. Make 48 HST like this.



5. Referring to the Sash Diagrams, arrange and join Fabric D and E 4½" squares with an HST, rotating the HST as shown. Make 7 Sash 1. Likewise, join squares and HST to make the number of other sashes as indicated, being careful to orient the HST as shown.



6. Join 2 Fabric H and 2 Fabric J 2½" squares to make a setting square, rotating the striped fabric as shown. Make 12 setting squares.

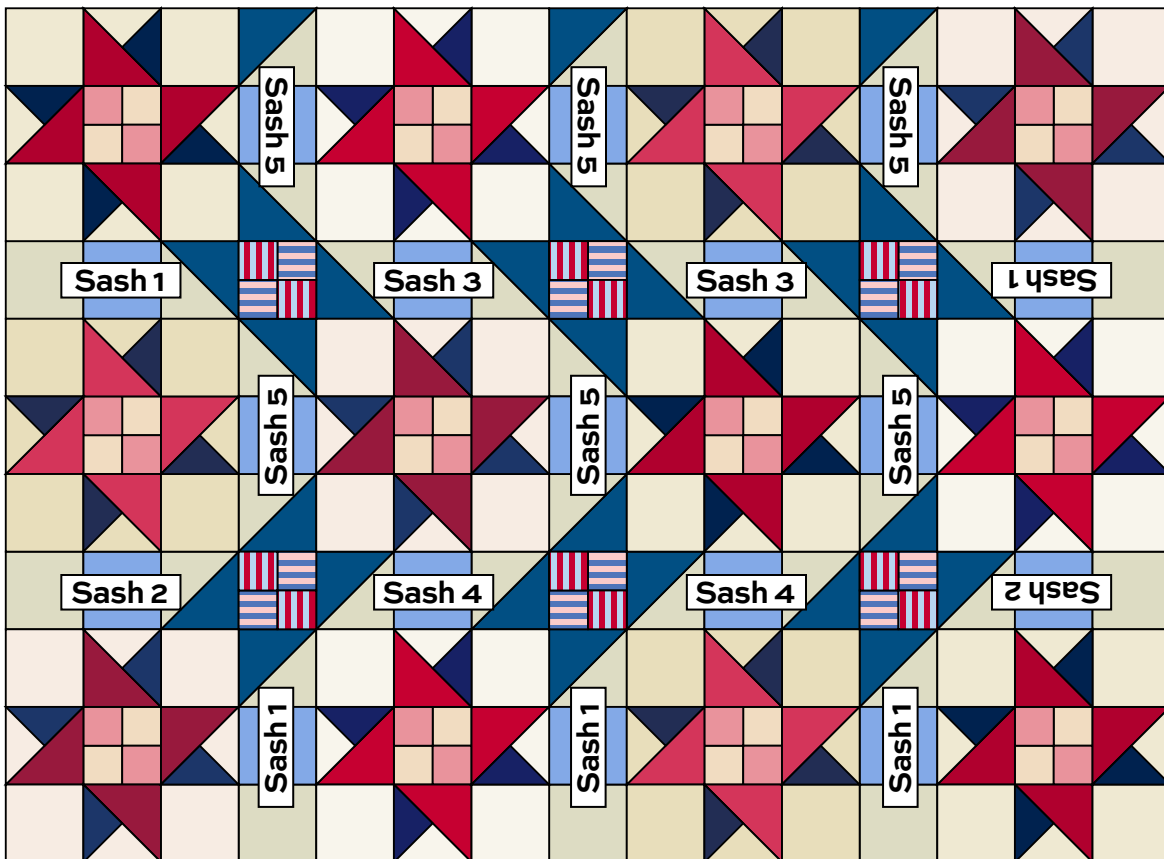
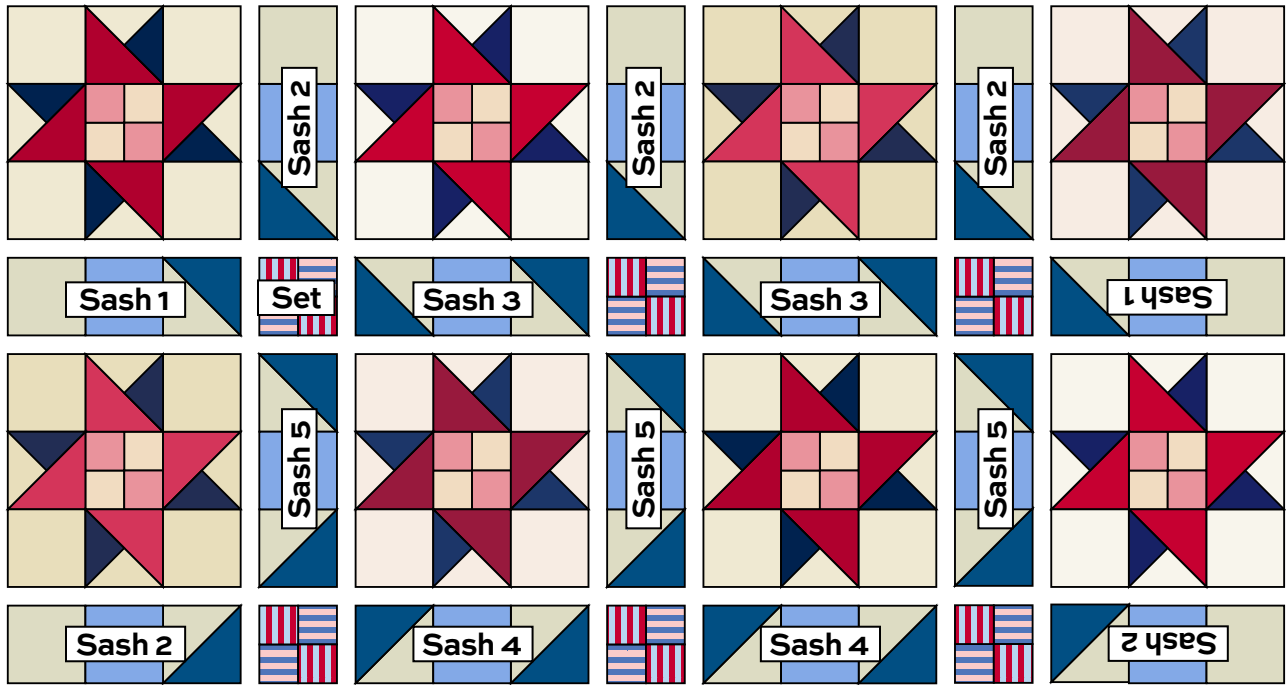


7. Arrange the blocks, sashes, and setting squares on a large flat surface or design wall. Work on 2 rows at a time if space is small. Look carefully at the rotation of the sashes as the zigzag design depends on correct placement. Stand back, or look at the design through the wrong end of binoculars, or take a digital photo. This will help you see any potential errors. Once you are satisfied, join 4 blocks with 3 sashes to make the top row. Join the appropriate sashes and 3 setting squares to make the second row. Continue in this manner to make the 9 rows. Finally, join the rows.

# Bright Stars Quilt

## Finishing the Quilt

8. Layer the quilt with batting and backing and baste. Quilt in the ditch around block patches. Quilt the plain 4" squares as you wish. Bind to finish the quilt.

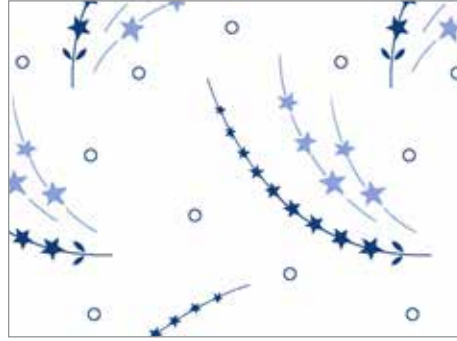


Quilt Assembly

# Tradition ANDOVER FABRICS



1321-B



1321-L



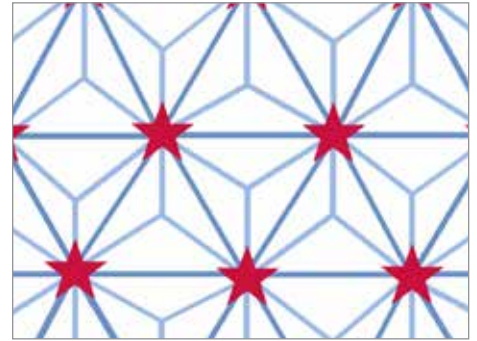
1321-R



1322-B



1322-L



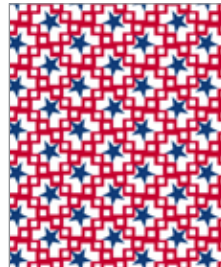
1322-R\*



1323-B



1323-L



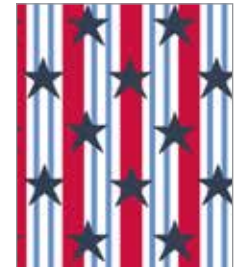
1323-R



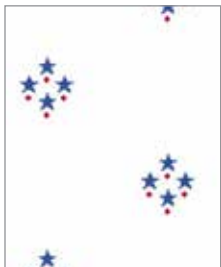
1324-B



1324-L



1324-R



1325-B\*



1325-L



1325-R



1326-B



1326-L



1326-R



1327-B



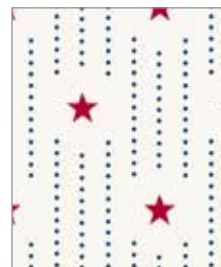
1327-L



1327-LB



1328-B



1328-L\*



1328-R

\*Indicates fabrics not used in quilt pattern. Fabrics shown are 75% of actual size.

Free Pattern Download Available

1384 Broadway, 24th Floor, New York, NY 10018

Tel. (800) 223-5678 • [andoverfabrics.com](http://andoverfabrics.com)